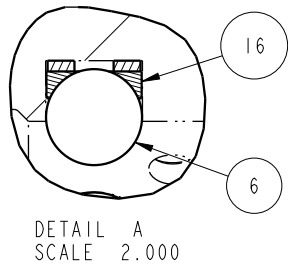
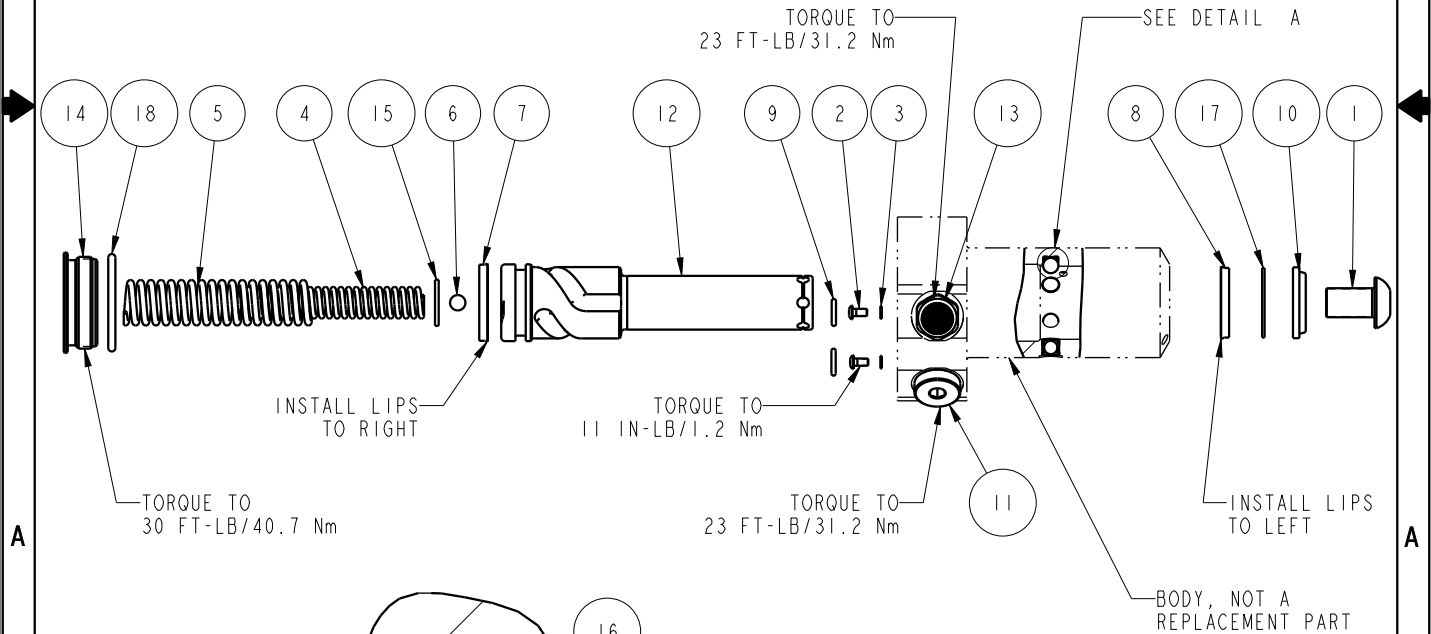



NO	QTY	PART NO	DESCRIPTION	STD SEAL KIT	FKM SEAL KIT	SPRING KIT
1	1	21500010	SCREW, CAP, BTNH, M12 X 20, ALY			
2	2	21500019	SCREW, CAP, BTNH, M3 X 6, ALY			
3	2	21500200	WASHER			
4	1	23313009	SPRING, COMPRESSION			X
5	1	23313010	SPRING, COMPRESSION			X
6	4	23600002	BALL, STEEL, ALLOY, .250	X	X	X
7	1	39011027	SEAL, BEVEL, 1-1/16 x 3/32 x 1-1/4	X	39052012	
8	1	39011046	SEAL, BEVEL W/HEEL INSERT, 7/8 x 1/8 x 1 1/8	X	39052003	
9	2	39050042	O-RING, (-011)	X	39051025	X
10	1	39053000	WIPER, SNAP-IN, (7/8)	X	X	
11	1	43068006	PLUG, PORT, HOLLOW HEX, G1/4			
12	1	47511304	PLUNGER, SC, HS, 11.6KN, RH			
13	1	49001905	BREATHER, 1/4 BSPP			
14	1	81400030	RETAINER, SC, HS, 2600			
15	1	81591301	DISK, PIVOT, BALL, SC, 2600, SA			X
16	3	90199958	ASSY, BALLSEAT, SC, 2600/5000	X	X	
17	1	39F54002	BU RING, (-212 CUSTOM)	X	X	
18	1	39V51043	O-RING, (-918)	X	X	X
N/A	N/A	60414304	KIT, SEAL, STANDARD			
N/A	N/A	6V414304	KIT, SEAL, FKM			
N/A	N/A	61414004	KIT, SPRING			



PARTS LIST	 VEKTEK VEKTEK, INC. 1334 E. SIXTH AVE. P.O. BOX 625 EMPORIA, KS. 66801 U.S.A.
	ASSEMBLIES AFFECTED PARTS LIST, ASSY, SC, BF, TC, 11.6KN, SA, RH 41421111
SIZE A	MPL1437
REV D	

D	5279	RELEASE	ALS	4/22/24
REV	IN ACCORDANCE WITH ECN	EFFECTIVE DATE	REVISED BY	DATE
DRW BY:	JDW	DRAWING STATUS: Released		
DATE:	03/21/13	PRODUCTION APPROVED FOR RELEASED STATUS ONLY		

SHEET 1 OF 1

FORM FEG035_PL_ASIZE, REV. B